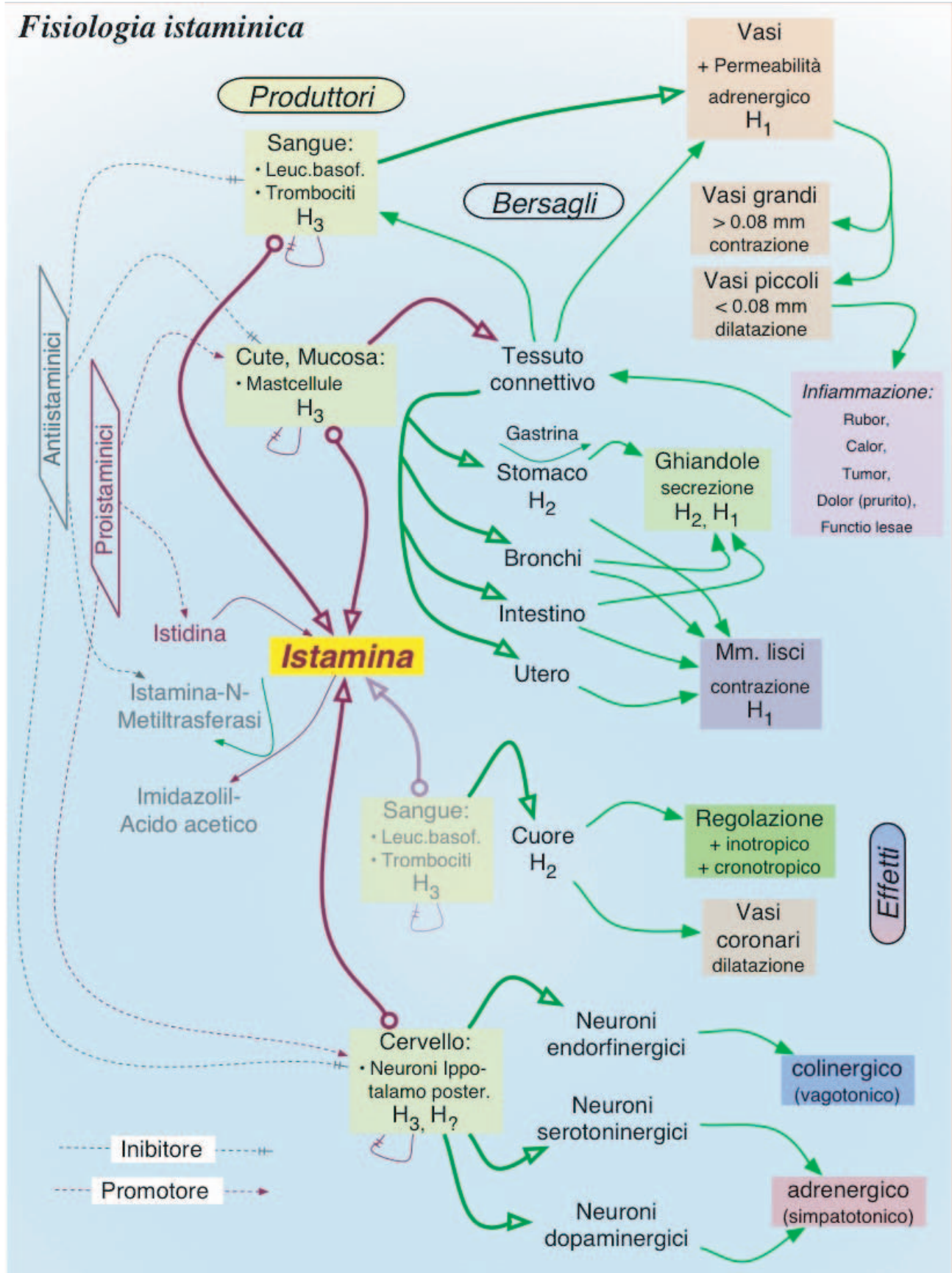
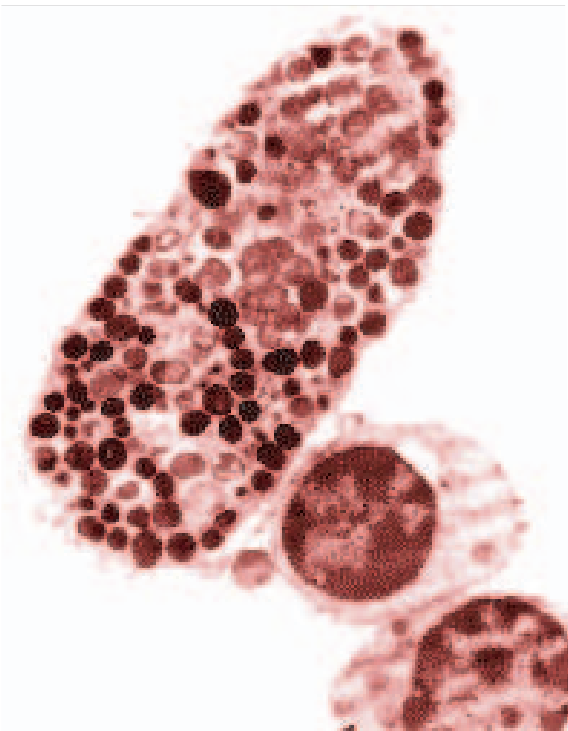


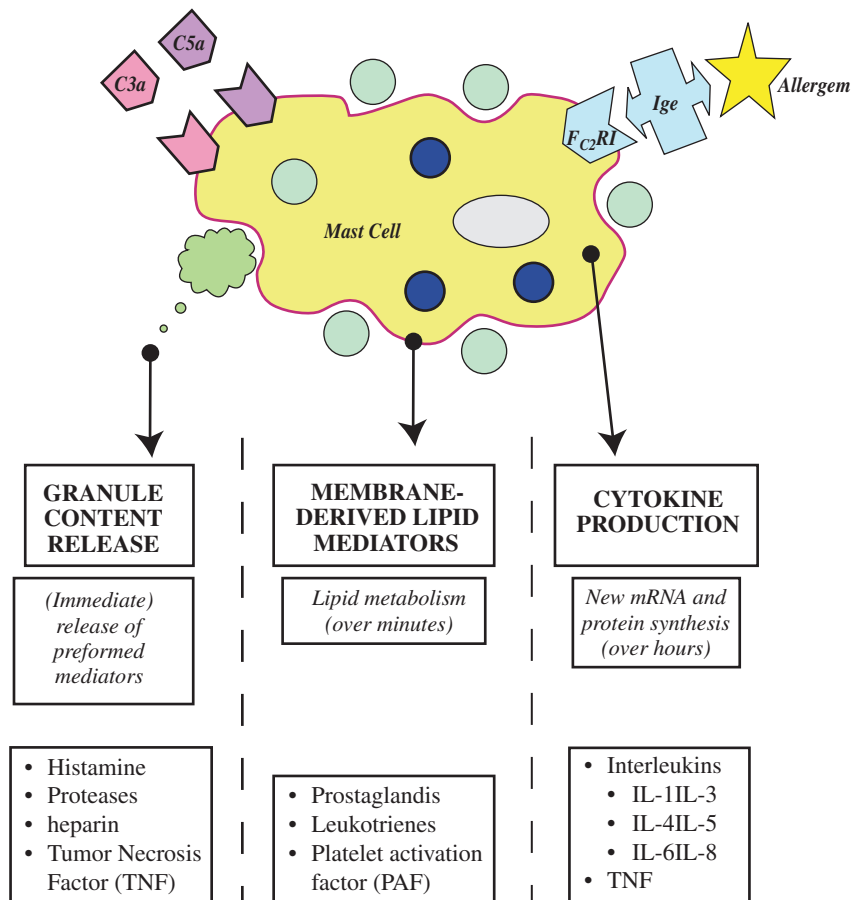
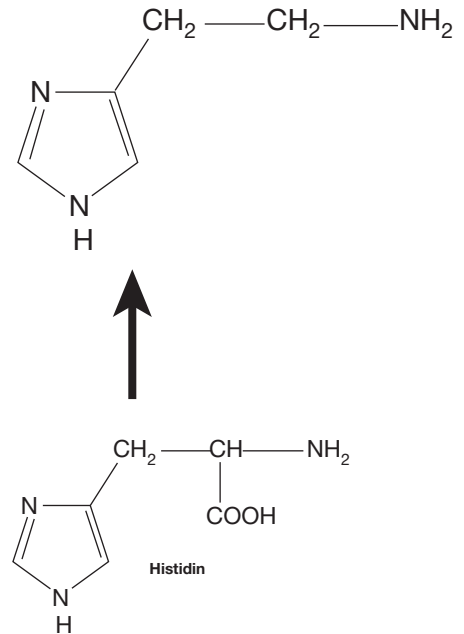
Istaminosi



Mastcellule => Istamina => Immunitario (infiammatorio)



Histamin



The Mast Cells are uniquely placed at the sites of possible entry into the tissues of pathogen or noxious agent: near skin surfaces, close to the mucous membranes lining body cavities and around blood vessel. They are capable of secreting or generating an array of mediators which have the ability to modify vascular and cellular reactions as well as to affect some of the plasma factor.