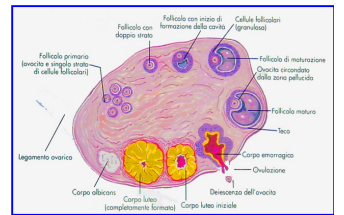
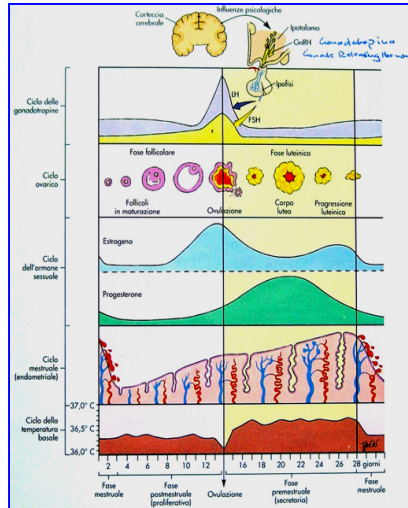
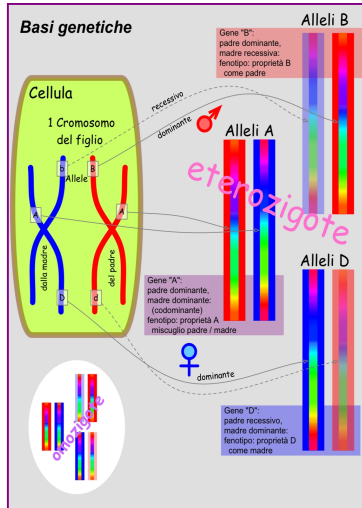
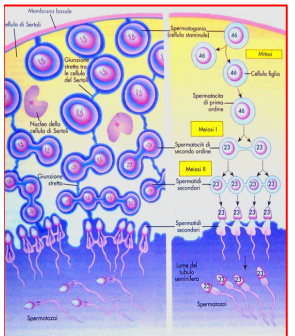
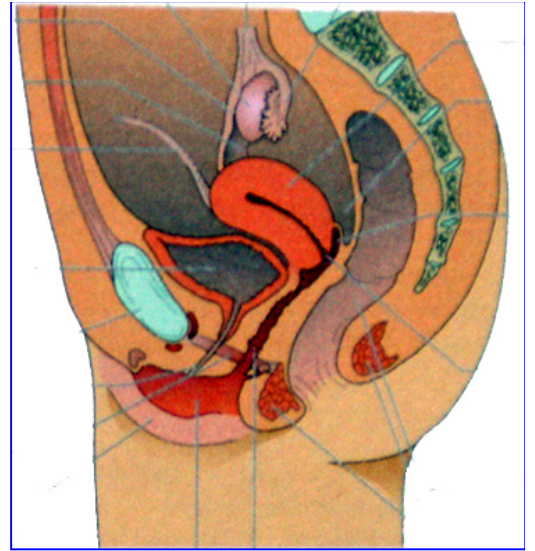


Materia medica Popolare Incontro 23 Programma serale

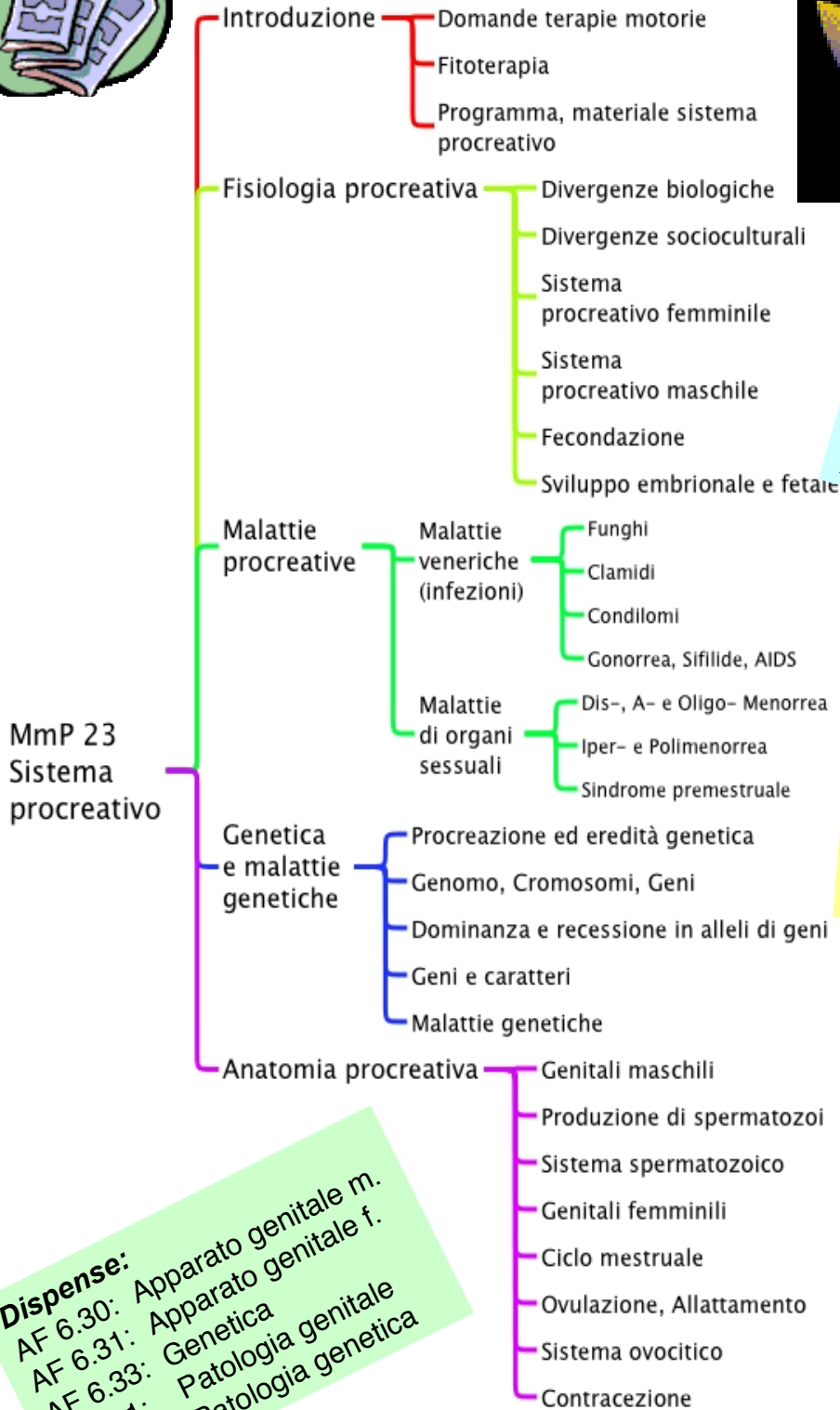
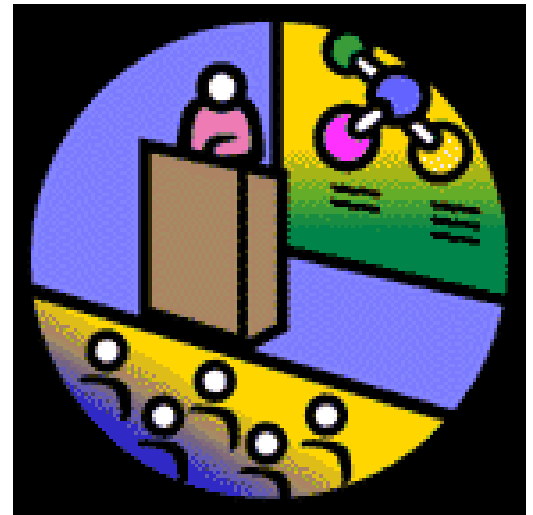
7 luglio 2004
Canvetto, Lugano



Sistema procreativo

Funzionamento della procreazione
Malattie procreative
Genetica e malattie genetiche
Anatomia procreativa

Temi, Materiale



*Da studiare autodidatticamente:
Thibodeau & Patton
Anatomia & Fisiologia
pp. 898...988*

Strumenti di lavoro:

- Temi serali
- Modelli procreativi
- Ricettario organi sessuali
- Compiti
- Domande di controllo

Dispense:
AF 6.30: Apparato genitale m.
AF 6.31: Apparato genitale f.
AF 6.33: Genetica
PT 6.1: Patologia genitale
PT 6.3: Patologia genetica